

高松城

Takamatsu Castle

Daimyo's Castle Venue

★★★
Three
Stars
Garden
the Michelin
Green Guide

栗林庭園

Ritsurin Garden

Japanese Garden / Daimyo's Guesthouse Venue



Venues of Dramatic Historical Stories



We support
Setouchi brands.



Turning Japan's cultural heritage sites into venues for conferences, ceremonies, parties, and other events. We can organize a variety of activities to make your ideas a reality.

Our creative cases ●



Daimyo's Castle Venue

Takamatsu Castle ● with Daimyo's Guesthouse



Venue Information

A truly beautiful place where a historical castle, urban streetscape, the natural scenery of the Seto Inland Sea, and art come together. Convenient access to the sea, sky, and land.

Accessible via JR Takamatsu Station and Takamatsu Port, the cosmopolitan city of Takamatsu offers a harmonious blend of metropolitan streets, nature, historical buildings, and modern art. As the host of the Setouchi Art Triennale, the city bustles with visitors from abroad during the event.

At the center of the city is Takamatsu Castle, one of Japan's Three Great Castles on the Water. During the Edo period (1603-1868), the castle was home to the rulers of the Takamatsu Domain, the Matsudaira clan.

The castle's unusual design brings in seawater to fill the moat. During the Meiji period (1868 -1912), the deteriorated original building was torn down. However, Hiunkaku Palace was restored in 1917.

This renowned work of architecture has been officially designated by the Japanese government as Important Cultural Property.

At this historically important cultural heritage site, a variety of events such as theatrical performances, concerts, outdoor film screenings, and wedding ceremonies are held.

There are also several seasonal events held here, including a cherry blossom light-up in spring and events to enjoy the evening cool in summer.

With its conveniently accessible location, the venue has been put to a variety of uses.



Takamatsu Castle



Sky view at Takamatsu Port

Example Venue Selection



Outdoor Cafe (Bonsai Cafe)



Fashion Show



Calligraphy Convention



Wedding Ceremony



Flying Balloon



Concert

★★★
Three Stars
Garden
the Michelin
Green Guide

Japanese Garden / Daimyo's Garden Venue

Ritsurin Garden ● *with Daimyo's Guesthouse*



Venue Information

Historically, this special place was used by the feudal lords to entertain guests. The famous garden is a national treasure; it is said that when visitors stroll through the grounds, the visible scenery changes with every step, a concept known as "ippo ikkei" ("one step, one view") in Japanese.

Ritsurin Garden is located on the main street that leads from central Takamatsu to Takamatsu Airport.

The feudal lord's garden boasts a history of approximately 400 years. The thousand pine trees planted here in the Edo period have been maintained in excellent condition, and are now registered as a Special Place of Scenic Beauty.

The largest Japanese garden registered as Important Cultural Property, it has been a center of omotenashi (Japanese hospitality) since the Edo period, when the feudal lords used it as a place to invite important guests for entertainment such as tea ceremony, boating, horseback riding, and duck hunting.

The garden has been awarded a high rating of three stars in the Michelin Green Guide Japan.

Abounding with natural beauty, the grounds are an excellent place to enjoy seasonal changes in scenery such as cherry blossoms, new greenery, autumn colors, snowfall, plum blossoms, and moon views, and are also used as a venue for performances of traditional Japanese arts including tea ceremony, flower arrangement, and calligraphy, serving as a place for exchange for both locals and visitors from abroad.

The location was also used for the 2016 G7 Summit, which brought it increased attention as a unique venue.



Engetsu kyo



Kikugetu Tei

Example Venue Selection



2016 G7 Summit After Party



Kikugetsu-tei Teahouse Wedding Ceremony



Calligraphy Performance



Wasen Boat Ride



Tea Ceremony



Souvenir Store

Japanese Garden / Daimyo's Guesthouse & Italian, French Restaurant Venue

Ritsurin Garden ● *with Daimyo's Guesthouse*



Venue Information

At the Sanuki State Guesthouse on the grounds of the feudal lord's garden, visitors can enjoy delicious cuisine along with Japanese art and culture. The venue is suitable for everything from small conferences to large parties.

In the center of Ritsurin Garden where the feudal lord's residence once stood sits the Commerce and Industry Promotion Hall. Constructed in the Meiji period, it was the first museum to be built in Kagawa Prefecture.

The building underwent renovations to increase its earthquake resistance in 2015.

The Meiji period exterior has been preserved and the building reformed to become the Sanuki State Guesthouse, which houses a cafe and a reception hall suitable for weddings, conferences, and other events.

In the North Hall is a banquet hall suitable for small conferences and training sessions or large parties for up to 200 guests.

The adjacent private lawn garden can also be used for garden parties.

In the West Hall is a cafe with a resident chef who previously worked as head chef at a famous hotel.

From casual Italian made with plenty of local ingredients to French course dining with high-end Kagawa food products like olive beef and olive Japanese amberjack, there's a menu to suit any occasion.

The West Hall chef can also provide high quality cuisine for parties held in the adjacent North Hall.



Garden Cafe Ritsurin



Special cuisine

Example Venue Selection



Wedding Ceremony in the North Garden



Wedding Party



Concert



Seminar



Banquet



Courtyard Art at Nighttime

Venue Specifications and Services

Venue list & data ●

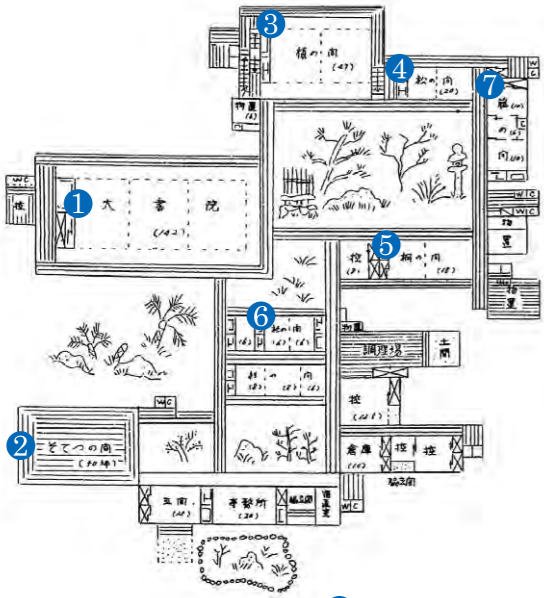
Takamatsu Castle Hiunkaku Palace

Address: 2-1 Tamamo-cho, Takamatsu City, Kagawa Prefecture
URL <http://www.takamatsujyo.com/>
Parking: 57 car parking spaces (free),
2bus parking spaces (reservation required)
Admission: Adults (16+ years) - ¥200 (¥140 for groups of 20+);
Children (6-15 years) - ¥100 (¥70 for groups of 20+)

Takamatsu Castle Hiunkaku Palace



Hiunkaku Palace Venue Specifications and Floor Space



- 1

Daishoin (Main Hall):
259 m² (2,788 ft²)
- 2

Sotetsu no Ma (Sago Palm Room):
165 m² (1,776 ft²)
- 3

Maki no Ma (Plum Pine Room):
78 m² (463 ft²)
- 4

Matsu no Ma (Pine Room):
33 m² (355 ft²)
- 5

Kiri no Ma (Paulownia Room):
43 m² (463 ft²)
- 6

Sugi no Ma (Cedar Room):
66 m² (710 ft²)
- 7

Fuji no Ma (Wisteria Room):
43 m² (463 ft²)

Ritsurin Garden Commerce and Industry Promotion Hall

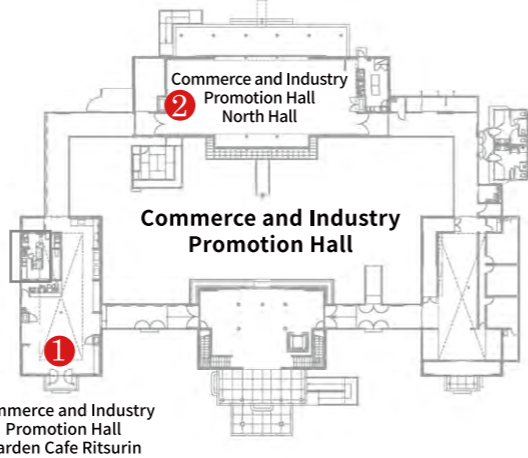
Address: 20-16 1-Chome, Tamamo-cho, Takamatsu City, Kagawa Prefecture
URL <http://www.my-kagawa.jp/ritsuringarden>
Parking: 62 car parking spaces
+ 13 bus parking spaces (tolled)
Parking Fee: Regular vehicles - ¥100/25 min;
large vehicles (buses, etc.) - ¥510/30 min
*In addition to the venue's own parking facilities, there are public parking facilities near Ritsurin Garden.
Admission: Adults - ¥410 (¥330 for groups of 20+);
Children (6-15 years) - ¥170 (¥140 for groups of 20+)

Ritsurin Garden



Commerce and Industry Promotion Hall Venue Specifications and Floor Space

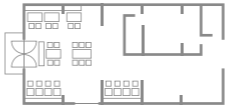
3 Commerce and Industry Promotion Hall North Garden (Private Garden)



Commerce and Industry
Promotion Hall
Garden Cafe Ritsurin

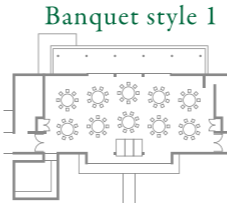
Usage examples at each venue

1 Commerce and Industry Promotion Hall Garden Cafe Ritsurin



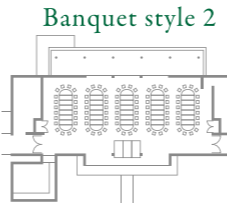
Venue Specifications and Floor Space
125 m² (1,345 ft²)

2 Commerce and Industry Promotion Hall North Hall

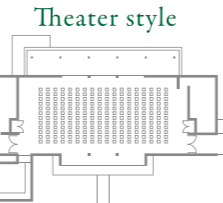


Banquet style 1

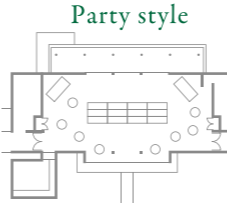
Venue Specifications and Floor Space
198.3 m² (2,134 ft²);
accommodates 100 people for seated dining,
150 for standing dining,
108 for a classroom setup
and 216 for a theater setup



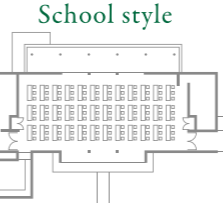
Banquet style 2



Theater style



Party style



School style

3 Commerce and Industry Promotion Hall North Garden (Private Garden)

Venue Specifications and Floor Space
500 m² (5,382 ft²)

Available Services

		Takamatsu Castle	Commerce and Industry Promotion Hall North Hall	Commerce and Industry Promotion Hall Garden Cafe Ritsurin
Function	Ceremony	○	○	×
	Conference	○	○	×
	Training session, Seminar	○	○	×
	Event	○	○	×
	Party	×	○	○
Catering	Boxed lunch	○	○	○
	Plate lunch	×	○	○
	Buffet	×	○	○
	Course	×	○	○
	Japanese cuisine	×	○	○
	Drink service	×	○	○
Smoking Areas	Indoor	×	×	×
	Outdoor	○	○	○
Venue	Indoor	○	○	○
	Outdoor (Garden)	○	○	×
Opening Hours	Morning 9:00 am - 12:00 noon	○	○	○
	Afternoon 1:00 pm - 4:00 pm	○	○	○
	Evening 5:00 pm - 9:00 pm	Negotiable	○	○
Arrangements	Emcees (English)	○	○	○
	Sound / Lighting	○	○	basic equipment
	Stage equipment, Etc.,	○	○	○
	Flowers / Decorations	○	○	○
	Traditional performing arts	○	○	○
	Traditional performing arts, Performers	○	○	○
	Interpreters (English)	○	○	○
Event Planning	Production	○	○	○
	Application for venue permission, Etc.,	○	○	○
	Venue set-up / Clearing / Cleaning	○	○	○

Example Schedule

Schedule ●

Conference and Party



Venue: Banquet Hall, Ritsurin Garden Commerce and Industry Promotion Hall North Hall

13:00	<u>Conference begins</u> (classroom setup)
15:00	<u>Conference finishes</u>
	<u>Guided Tour of Ritsurin Garden</u>
15:30	<u>Break (matcha green tea and sweets)</u>
17:00	<u>Party begins</u> (party setup) <small>*North Garden (private garden) also available for use.</small>
19:00	<u>Party finishes</u>



Training Session and Party



Venue: Training Session - Takamatsu Castle;
Party - Banquet Hall, Ritsurin Garden Commerce and Industry Promotion Hall North Hall


11:00	<u>Training session begins</u> (classroom setup)
12:00	<u>Lunch</u> (boxed lunch)
13:00	<u>Training session resumes</u>
15:00	<u>Training session finishes</u> Guided tour of Takamatsu Castle Move to Ritsurin Garden Guided tour of Ritsurin Garden
17:00	<u>Party begins</u> <small>*North Garden (private garden) also available for use.</small>
19:00	<u>Party finishes</u>



Count on us to organize your ceremony or party; we'll handle everything from planning to production.

Introduce ●

We're experts at planning ceremonies, parties, and weddings. With plenty of creative ideas and a wealth of experience, we provide high quality service that goes above and beyond our customers' expectations.



Fairytale, inc.

Noriko Fujita

藤田 徳子

Representative Director of Fairytale, Inc.,
Producer of Bridal & Mice

We are a specialist team handling ceremony and party planning, production, and management.



There are many wonderful places to visit
around Kagawa Prefecture.

Sightseeing, Gourmet and Experience ●



Naoshima Island



Seto Inland Sea



Marugamemachi Shopping Arcade



Shodoshima Island



Fireworks



Somen Noodle Making



Udon Noodle Making



Sanuki Udon Noodles



Marugame Castle



Pilgrimage



Shodoshima Olive Park



Konpira Grand Theatre (Kanamaru-za Theatre)



Marugame
Genmeiro Inokuma Museum
of Contemporary Art



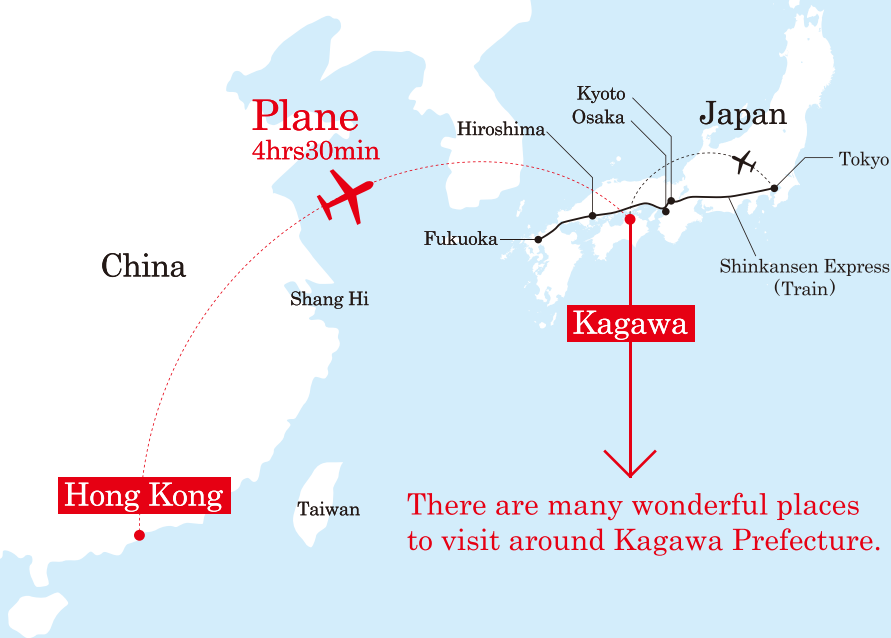
Bonsai



Sohonzan Zentsuji Temple



Konpira Onsenkyo



A Main Entrance to Takanatsu City, Sun port Takamatsu



Fairytale, Inc.

<http://www.fairytale.co.jp>

Postcode 760-0052 | 2-2-8, Kawaramachi, Takamatsu-city, Kagawa

Phone | +81-87-863-6685 / Fax | +81-87-863-6674

For more information,
please contact us here.

info@fairytale.co.jp